



UNIVERSITÀ
DEGLI STUDI
FIRENZE

Flood Exposure of Environmental Assets

Author: Gabriele BERTOLI, Chiara Arrighi, Enrica Caporali
Department of Civil and Environmental Engineering

PhD program in Civil and
Environmental Engineering



EU – Flood Directive
Flood risk



IT – D. Lgs 49/2010

Develop a **non-econo-centric** method for
the assessment of the flood exposure of the
environmental assets

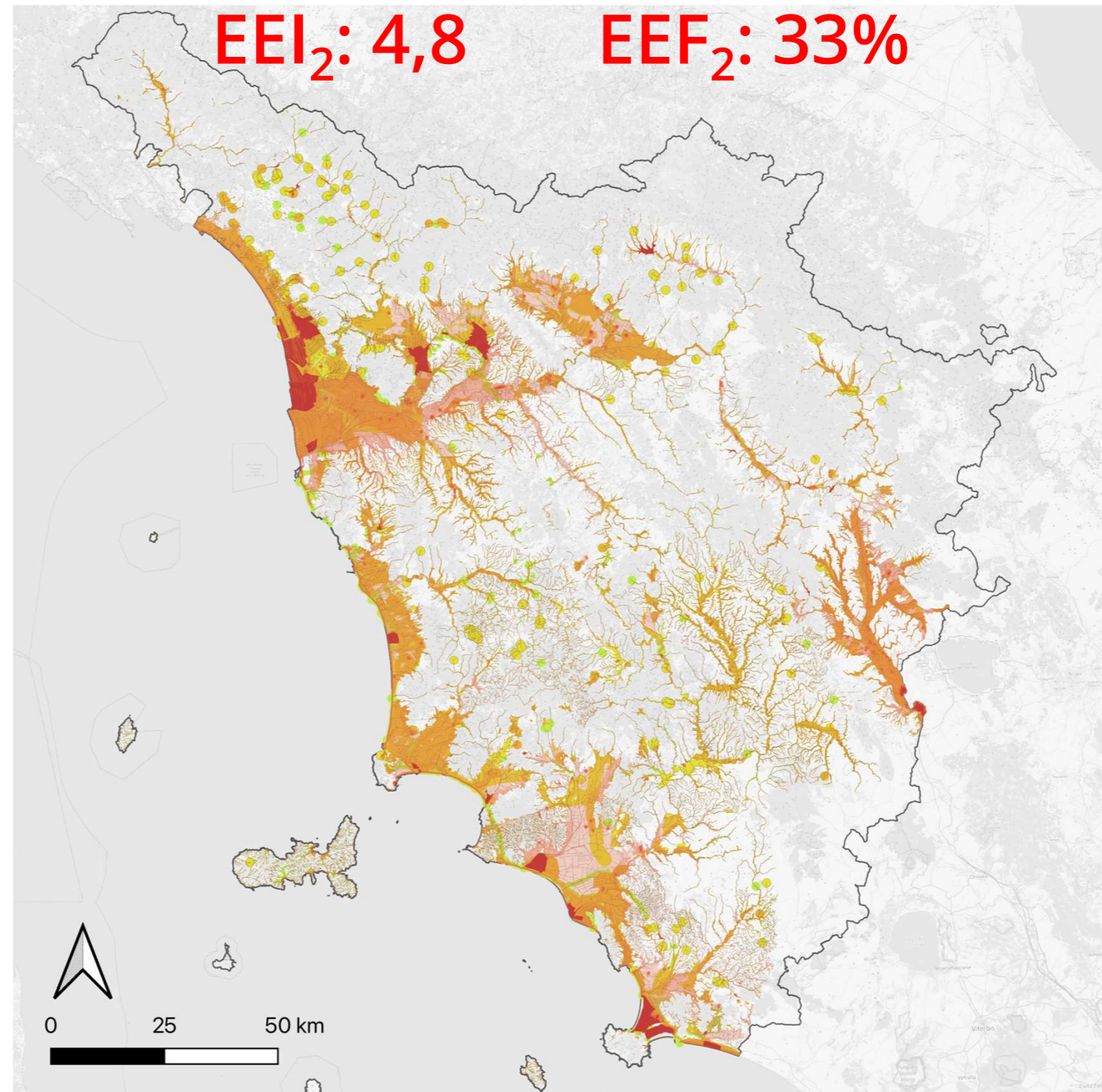
Current issues:

- **No existing standard**
- Often neglected or marginally
considered in flood risk assessments
- **Intangible values**
- Subjectivity
- Complex commodification

Environmental assets



Listing relevance	
Local	National
Regional	International
ES main category	
Supporting	Provisioning
Regulating	Cultural



Flood exposed environmental assets - L2 analysis

- RAMSAR
- Lakes p500m
- Coastal territories
- Lake buffer areas
- Groundwaters
- Rivers
- Wildlife protection areas
- UNESCO
- Wildlife restocking areas
- Regional parks
- Natura 2000
- Karst springs
- Karst forms
- National reserves
- Agricultural areas with landscape
and cultural significance
- Natural sinkholes
- Monumental trees
- Areas of archaeological interest
- Areas inside historical landscapes
- Provincial reserves
- Water springs
- Woods and forests
- Areas of high public interest
- Wildlife protection oasis
- MTB tracks
- Viewpoints
- Provincial parks
- Tracks naturalistic network
- National parks
- Gas emitting
- Cave entrances
- Glacial cirque
- Mountains higher than 1200m

OpenStreetMap

EEI₁ Overall Environmental asset Exposure: expresses the flood
exposure of the assets for a reference area.

EEF₁ Exposed Environmental Fraction: describes, in percentage, the
exposed value with respect to the maximum total value (EV) of
the assets in the area.

Vote for this poster

