

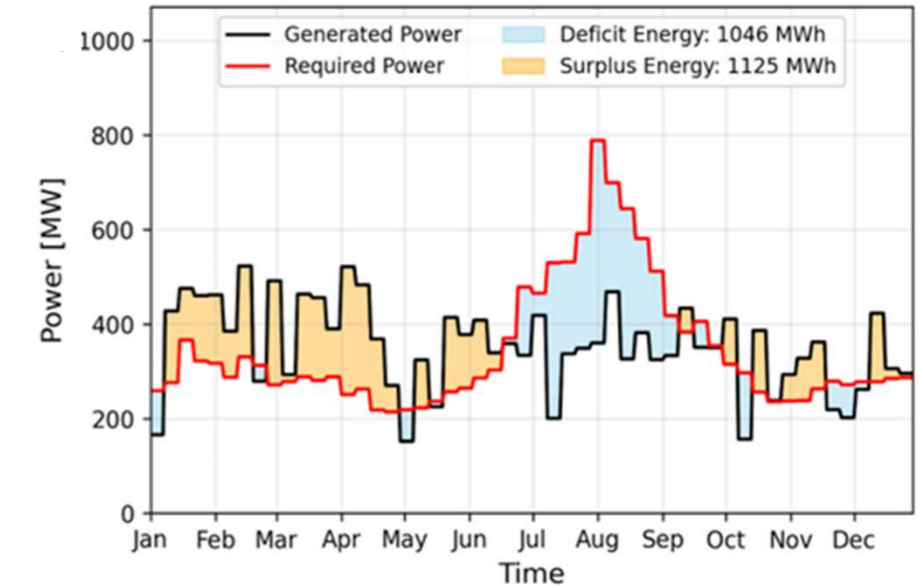
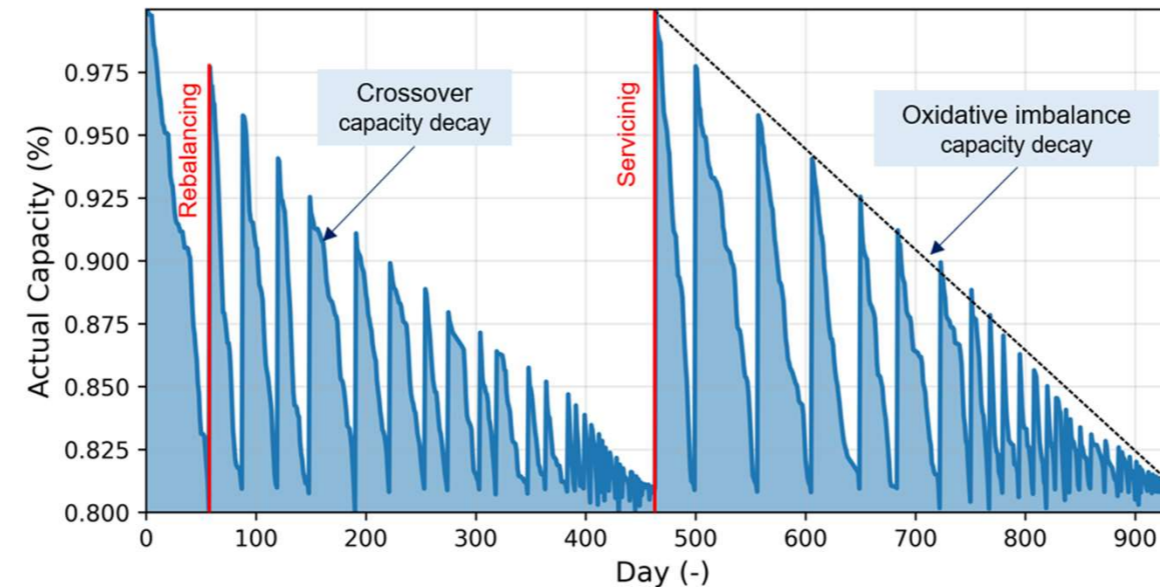
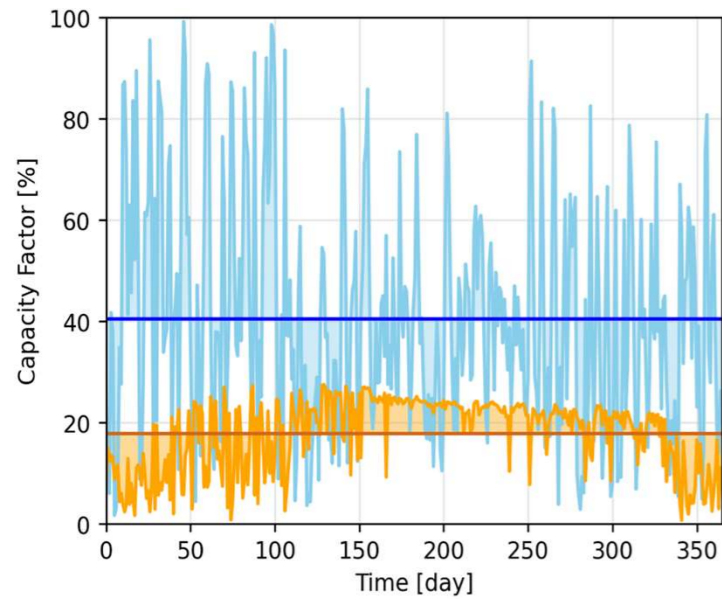


UNIVERSITÀ
DEGLI STUDI
FIRENZE

REASE Energy Section

Authors: **Superchi F., Travaglini R., Galli C.**
Department of Industrial Engineering
Laboratory: **REASE**

PhD program in
Industrial Engineering

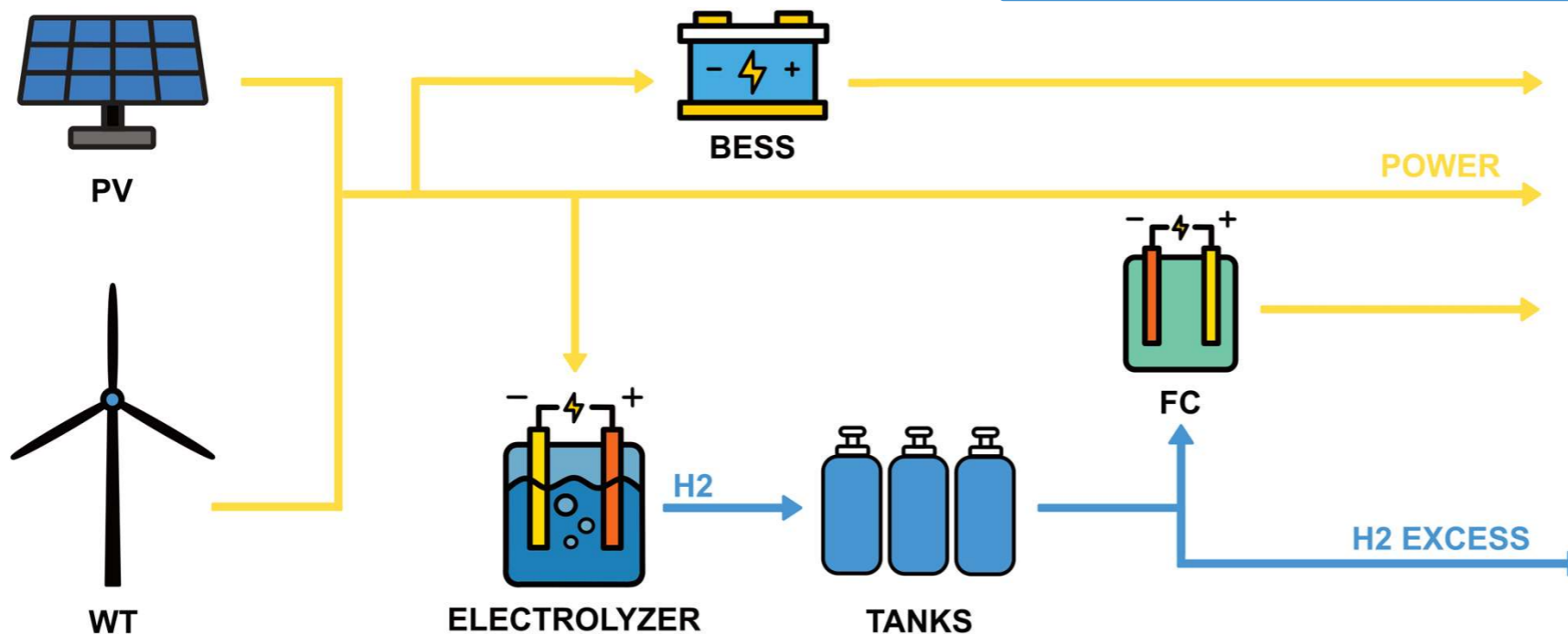


BESS modelling

- Li-ion & VRFB

Energy Management System

- Optimization algorithms
- Load forecasting



Domestic EMS

- TILOS: real case studies



Industrial EMS

- Pramac MUST project



Hydrogen for
Hard-to-abate

Wind Farms optimization

- Innovative WTs control algorithms

Electrolyzers modelling

- Lumped parameters
- Physics based

Conversion devices modelling

- Generators
- Fuel cells

Vote for this poster

REASE ENERGY

